



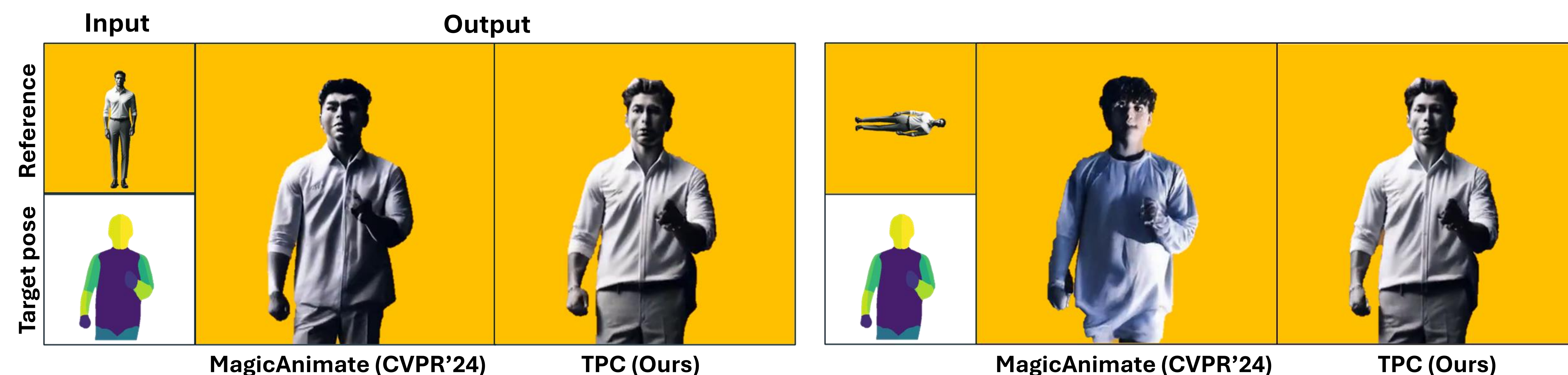
TPC: Test-time Procrustes Calibration for Diffusion-based Human Image Animation

Sunjae Yoon, Gwanhyeong Koo, Younghwan Lee, Chang D. Yoo

Korea Advanced Institute of Science and Technology (KAIST)

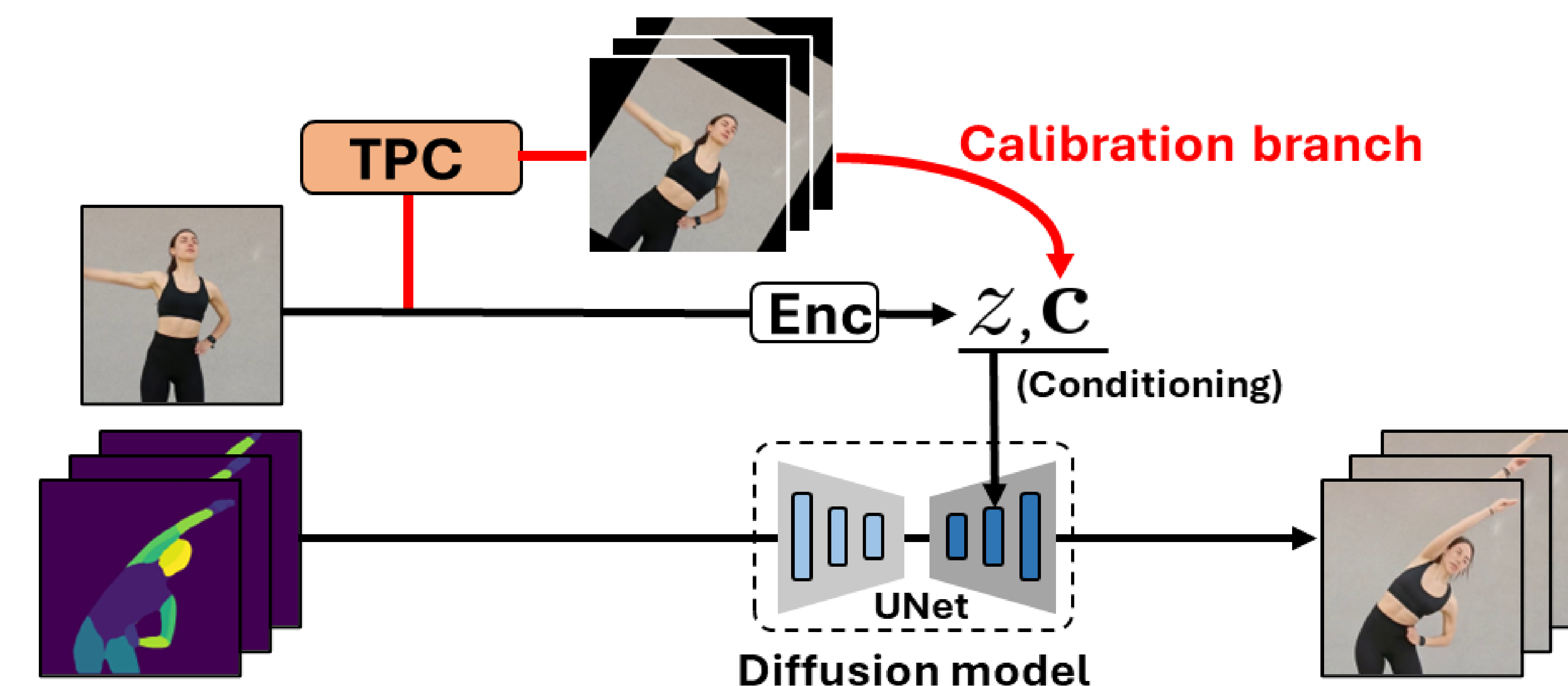
Problem: Compositional misalignment of human shape

Method: Test-time Procrustes Calibration (TPC)



“Our method is robust to compositional misalignment”

Compositional misalignment: human shapes in reference and target are not aligned in terms of scale and rotation

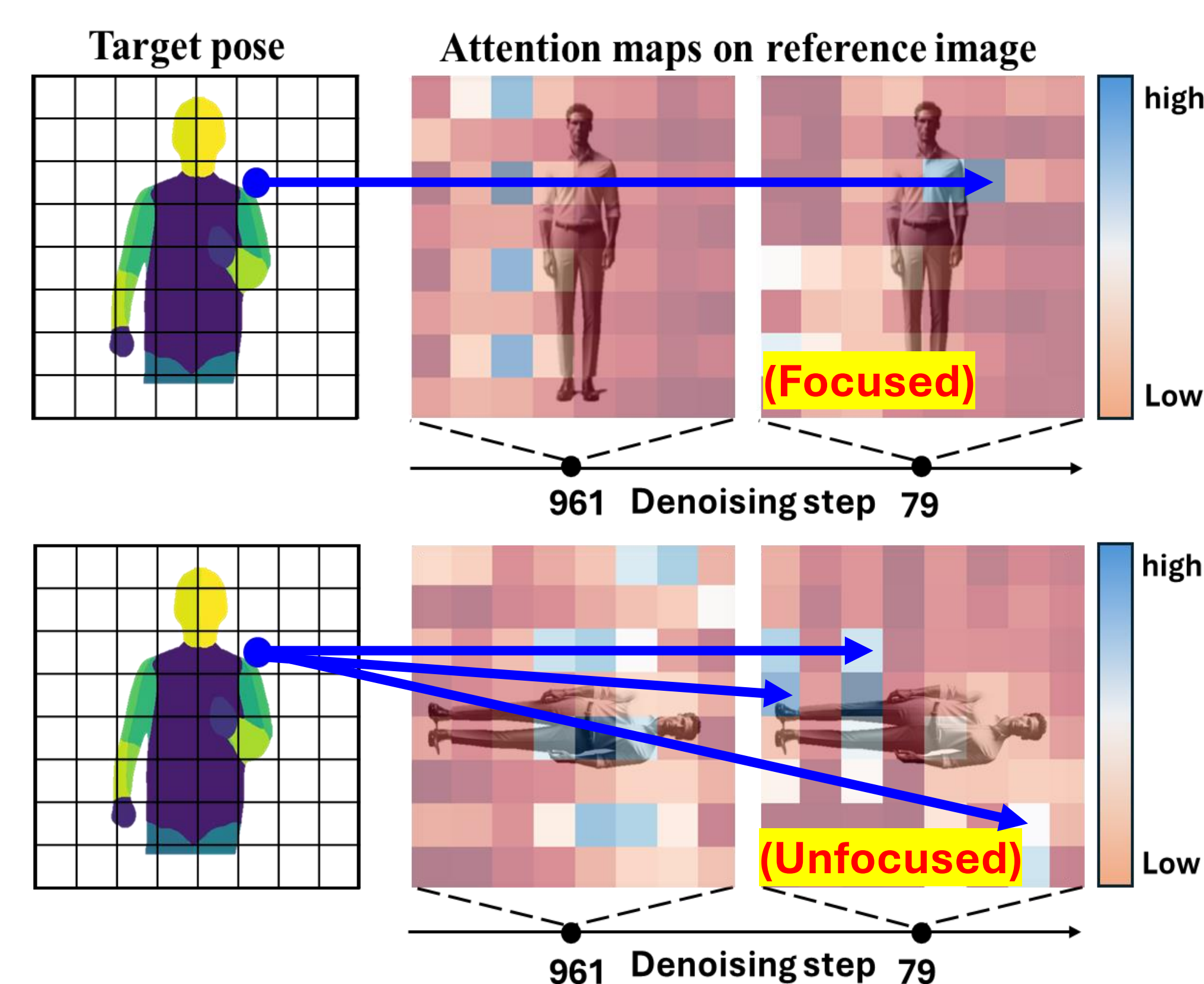


Test-time Procrustes Calibration aims to find the best alignment between two human shapes by scaling, translating, and rotating

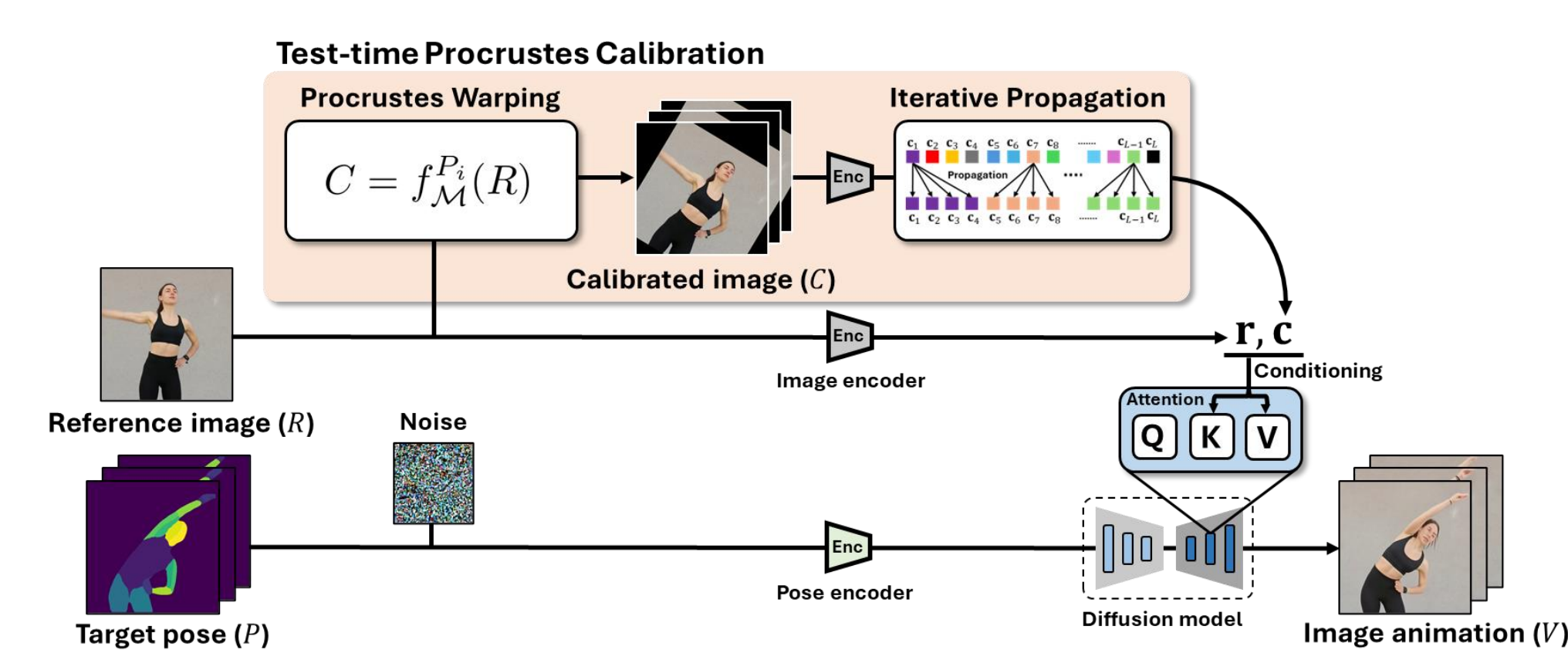
Further Details

Experiments

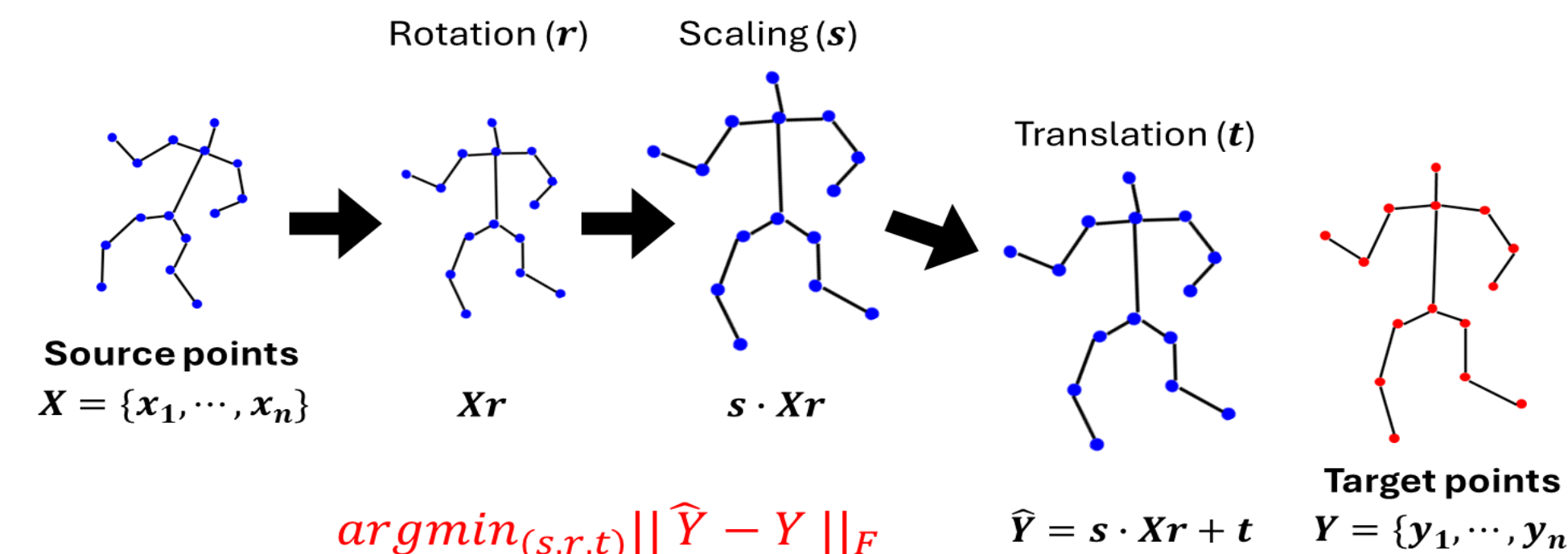
Observation



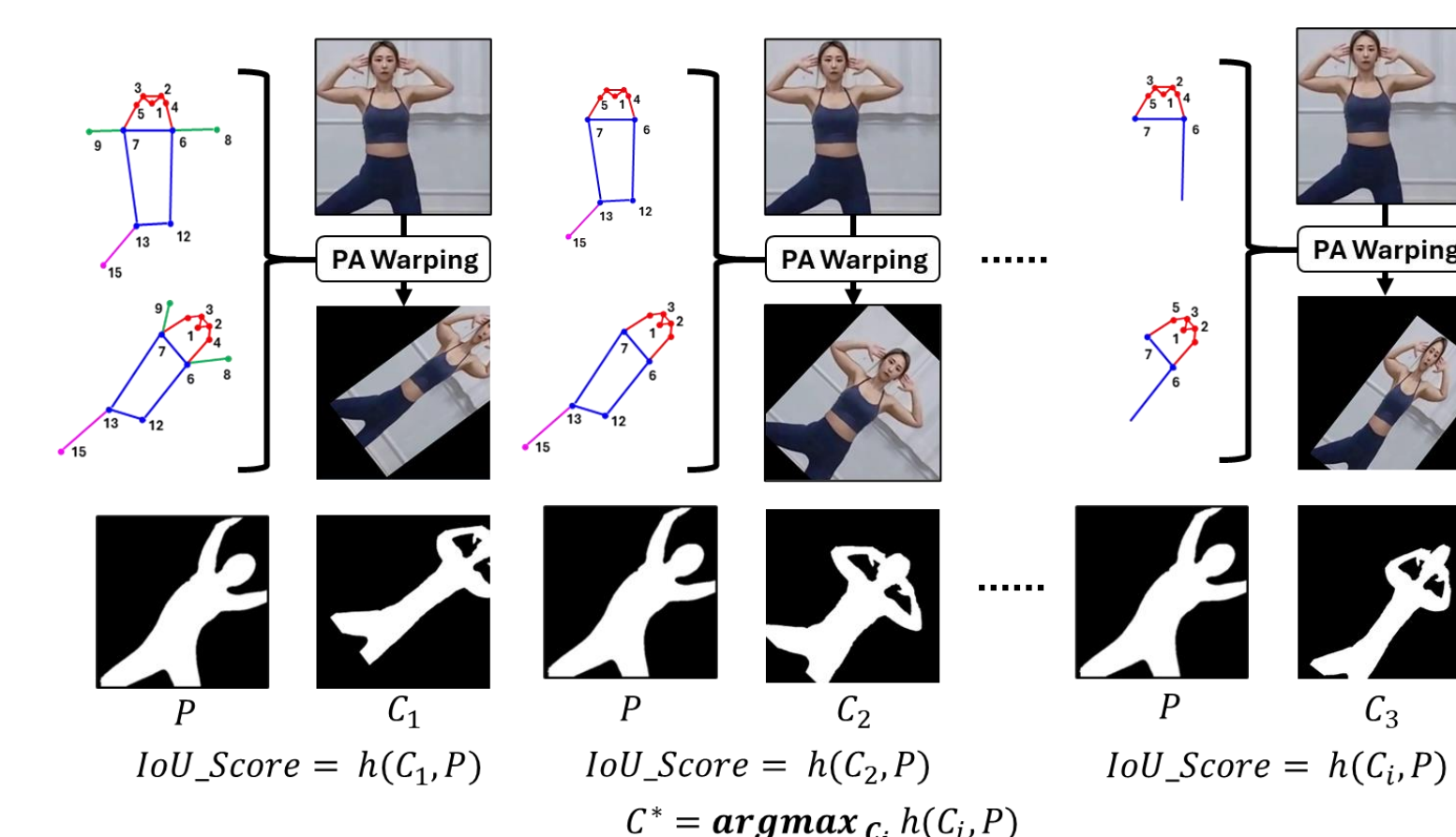
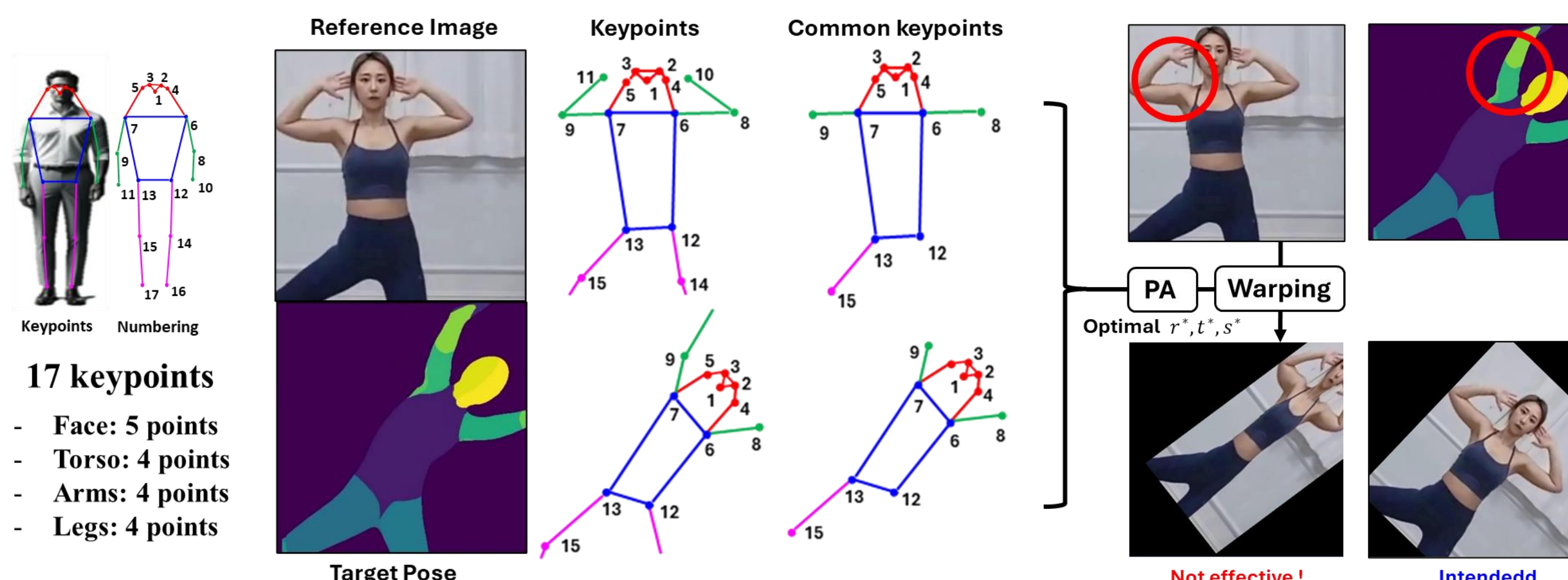
Details of TPC



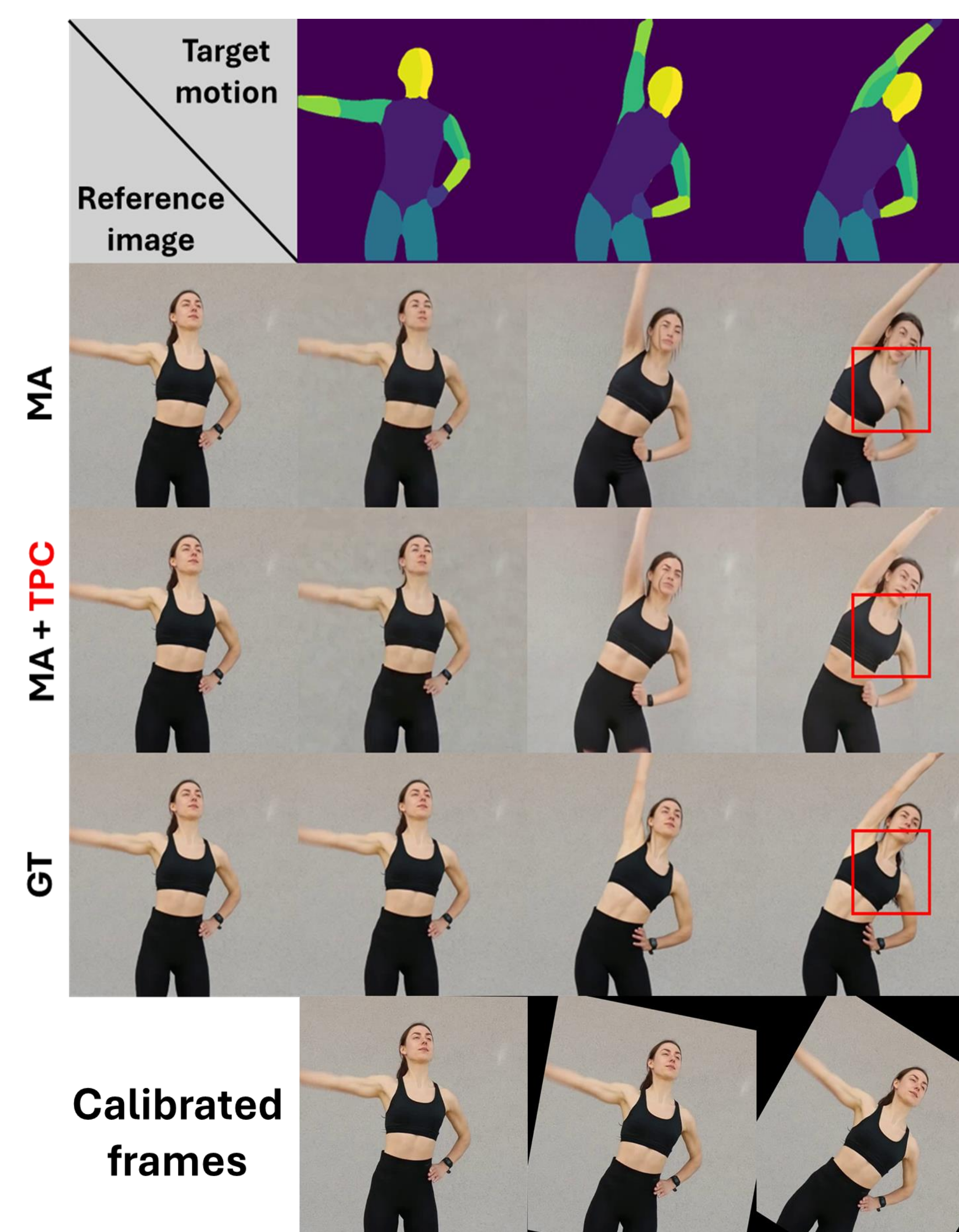
Procrustes Analysis (PA)



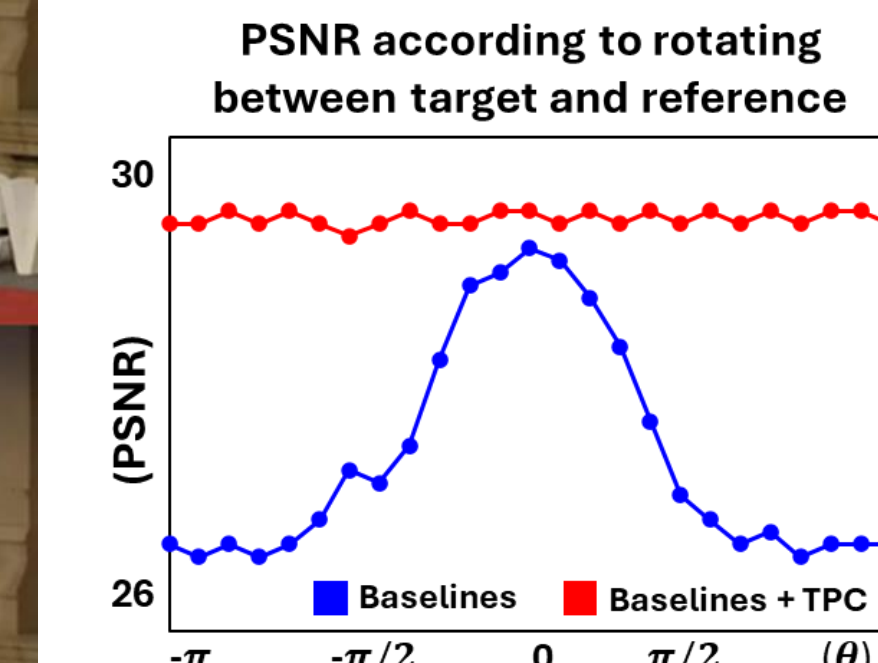
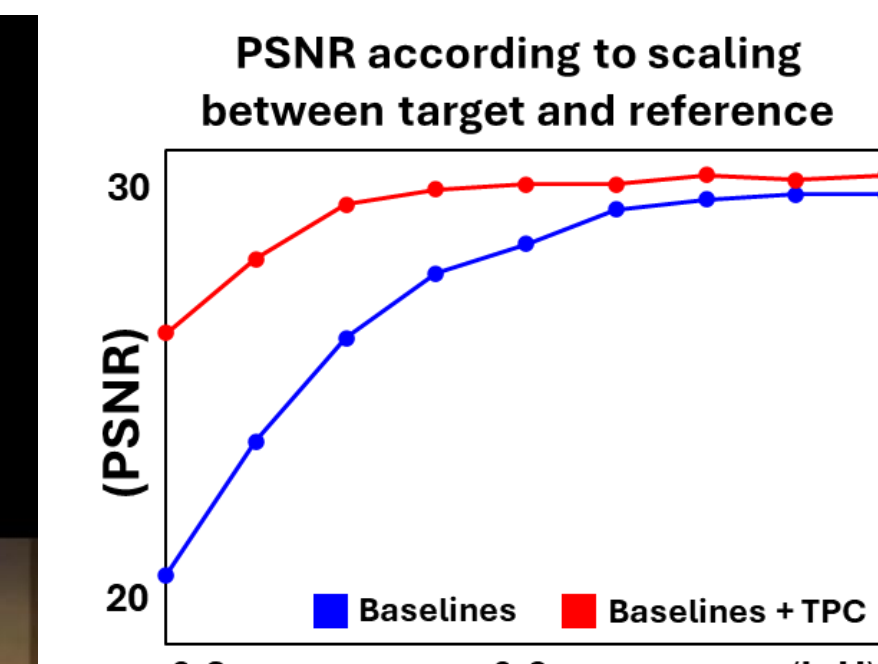
Common visible keypoints for PA



Qualitative results



Robustness



Paper



Video

